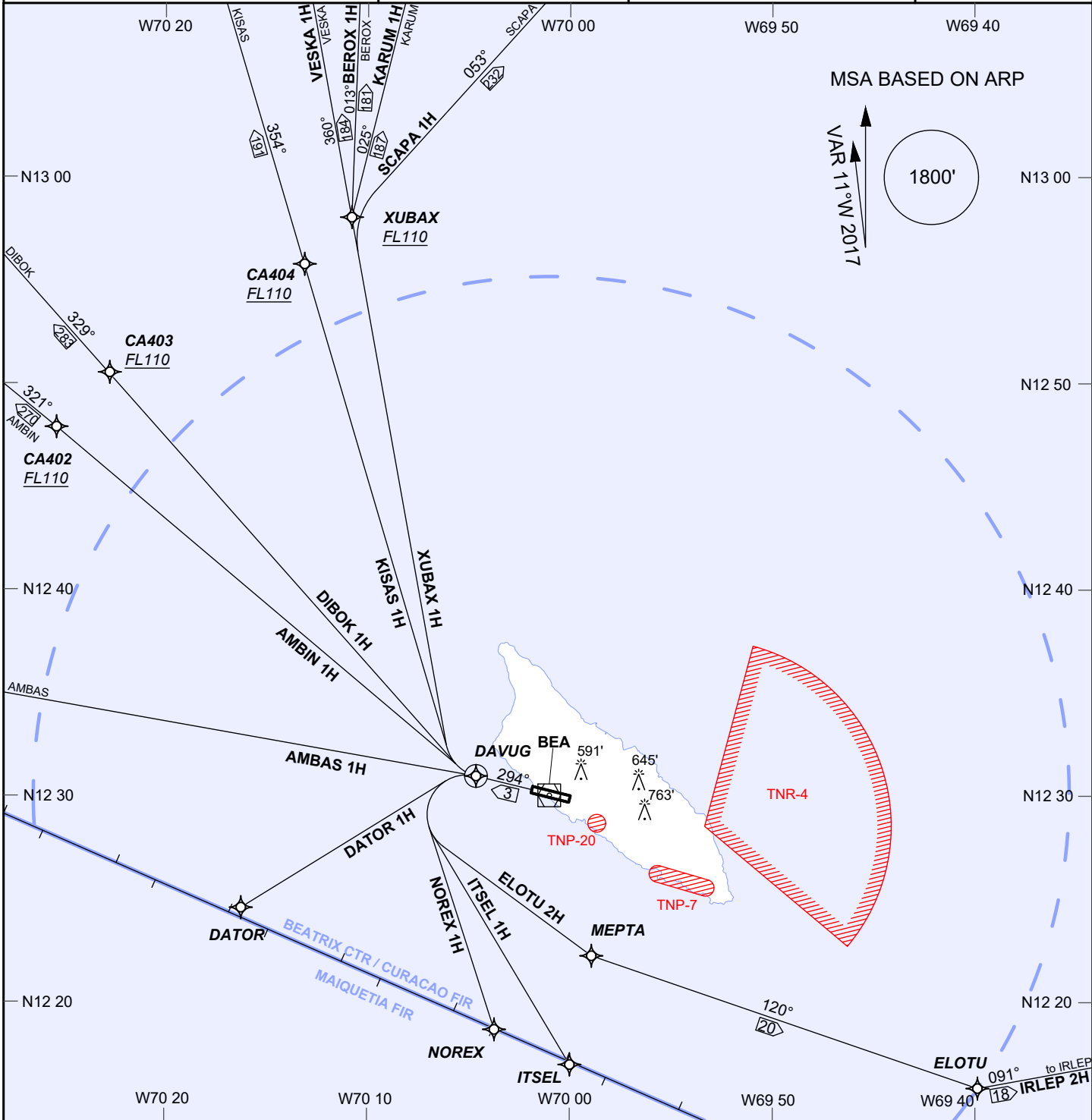


**AIP DUTCH CARIBBEAN**

RNAV (GNSS) DEPARTURES RWY 29 INSTRUMENT	AD ELEVATION: 62'	BEATRIX: TWR	118.0 APP 120.9	REINA BEATRIX INT'L (TNCA)
	TRANS LEVEL: FL 40	APRON	121.6 ATIS 132.1	ARUBA
	TRANS ALT: 2500' (2438')			



CHANGES: altitude restriction at MEPTA removed. SID designator: ELOTU 1H renamed ELOTU 2H and IRLEP 1H renamed IRLEP 2H.

1. RNAV-1 required.
2. GNSS required.
3. BEA VOR declination 11°W.
4. XUBAX 1H: After passing XUBAX, expect ATC instructions to first en-route waypoint.
5. Altitudes, elevations and heights in feet, distances in nautical miles, bearings are magnetic.

**ICAO SID DESIGNATORS**

AMBAS 1H	ITSEL 1H
AMBIN 1H	KARUM 1H
BEROX 1H	KISAS 1H
DATOR 1H	NOREX 1H
DIBOK 1H	SCAPA 1H
ELOTU 2H	VESKA 1H
IRLEP 2H	XUBAX 1H

TNP-7  
TNR-4  
TNP-20  
GND - 2500'  
SFC-by NOTAM  
GND - 2500'

